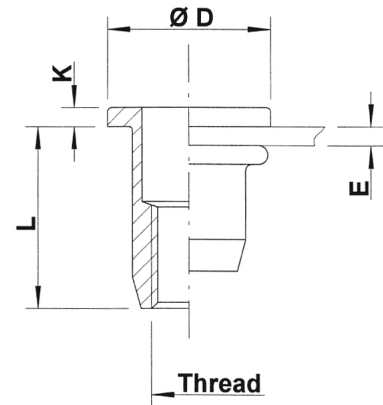
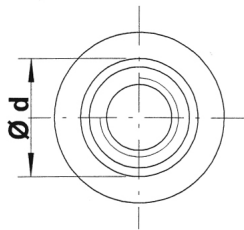
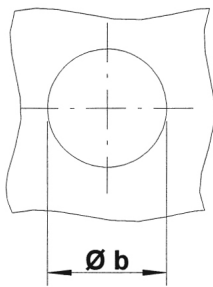




Stainless Steel 304

Round shank
Flat head
Open end
UPO / SPO



THREAD	TYPE	E = grip	L	b ^{+0,1} = drill dia	d = shank dia	D	K	kg/1000	ORDER CODE	BOX Small	BOX Large
M4	UPO20	0,5-2,0	11,0	6,0	6,0	9,0	1,0	1,5	544010	(500)	7500
	UPO35	2,0-3,5	12,5					1,6	544020	(500)	5000
M5	UPO30	0,5-3,0	11,5	7,0	7,0	10,0	1,0	1,8	545040	(500)	4000
	UPO50	3,0-5,0	15,0					2,2	545050	(500)	3000
M6	UPO30	0,5-3,0	14,5					4,1	546020	(500)	2000
	UPO50	3,0-5,0	16,5	9,0	9,0	12,0	1,5	4,4	546035	(500)	2000
	UPO70	5,0-7,0	18,5					4,7	546050	(500)	2000
M8	UPO30	0,5-3,0	16,0					6,1	548010	(500)	1250
	UPO55	3,0-5,5	18,5	11,0	11,0	15,0	1,5	6,5	548020	(500)	1250
	UPO80	5,5-8,0	21,5					7,5	548035	(500)	1000
M10	UPO30	0,8-3,0	18,5	12,1	12,0	15,0	1,0	5,9	540020	(500)	1000
	UPO50	3,0-5,0	20,5					6,4	540030	(500)	1000
M10	SPO35	0,8-3,5	21,5					10,2	540600	(100)	750
	SPO60	3,5-6,0	24,0	13,0	13,0	17,0	1,5	10,9	540605	(100)	750
	SPO85	6,0-8,5	26,5					11,6	540606	(100)	500
M12	UPO40	1,0-4,0	25,0	16,0	16,0	23,0	2,0	19,8	542020	(100)	400
	UPO70	3,0-7,0	28,0					21,5	542050	(100)	300

Small box: only for DFS customers, not export - (xxx) handling cost can be charged

All dimensions in mm - Technical data subject to modification
Tolerances and characteristics see chapter "Technical Information"

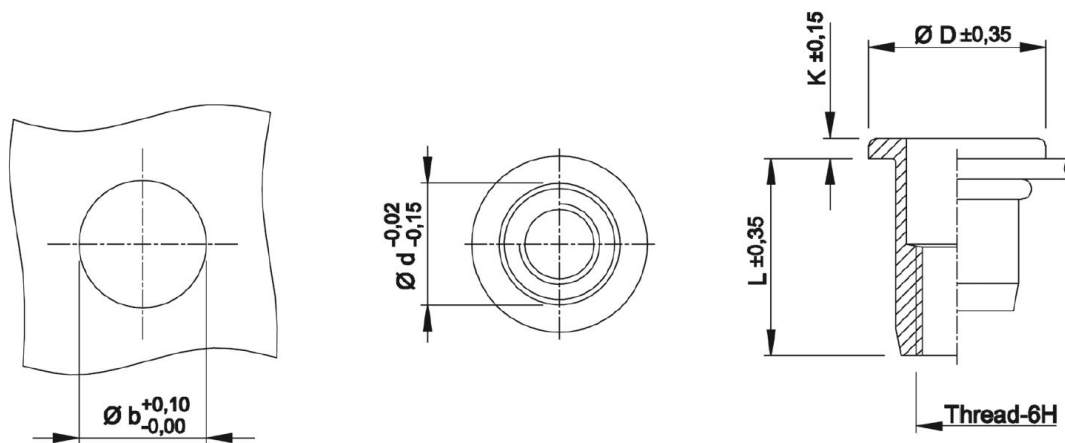


Technical Data

● General tolerances

	Head form	Dimensions in mm	Dimensions in inches
D (head diameter)	Flat head Countersunk head Low profile head	$\pm 0,35$ 0 -0,5 -0,15 +0,3	± 0.014 0 -0.020 -0.006 +0.012
K (head thickness)	Flat head Countersunk head Low profile head	$\pm 0,15$ 0 +0,3 -0,05 +0,3	± 0.006 0 +0.012 -0.002 +0.012
L (length)	General Stainless M10 shank 13 mm	$\pm 0,35$ $\pm 0,5$	± 0.014 ± 0.020
Metric thread= 6H			
Shank size	General (incl. KN) Splined shank (RS) M10 shank 12,4 mm	-0,02 -0,15 $\pm 0,08$ $\pm 0,08$	-0.001 -0.006 ± 0.003 ± 0.003

Example:



● Recommended tightening torque values (Nm)

Max. recommended torque to avoid damaging the threaded connection and ensure optimal screw-nut assembly:

	M3	M4	M5	M6	M8	M10	M12
Aluminium	2,0	2,2	4,5	9,5	17,0	30,0	
Steel	2,5	3,0	5,9	11,0	25,0	49,0	80,0
Stainless Steel	2,5	3,0	5,9	11,0	25,0	49,0	80,0

Recommendations for 8.8 bolts in steel and class A2-70 bolts in stainless steel.