

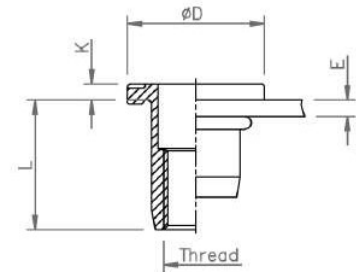
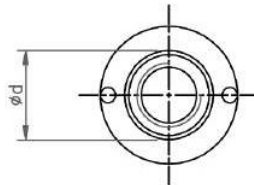
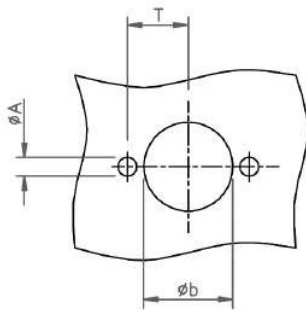


Stainless Steel 304

Round shank
Anti-turn head
Open end

ATO

easy repair solution:
extra high
torque-to-turn values



| THREAD | TYPE | E = grip | L | b ^{+0,1} = drill dia | d = shank dia | D | K | A | T | kg/1000 | ORDER CODE | BOX Small | BOX Large |
|--------|-------|----------|------|-------------------------------|---------------|------|-----|-----|------|---------|------------|-----------|-----------|
| M6 | ATO30 | 0,5-3,0 | 14,5 | 9,0 | 9,0 | 14,0 | 1,5 | 1,8 | 6,25 | - | - | - | - |
| M8 | ATO30 | 0,5-3,0 | 16,0 | 11,0 | 11,0 | 17,0 | 2,0 | 2,3 | 7,50 | 7,4 | 548 1010* | - | 1200 |
| | ATO55 | 3,0-5,5 | 18,5 | | | | | | | | 548 1020* | - | 1000 |
| M10 | ATO35 | 0,8-3,5 | 21,0 | 13,0 | 13,0 | 19,0 | 2,0 | 3,0 | 8,75 | 11,3 | 540 1600* | - | 750 |

Tool to position Ø A:

| | |
|-----|---------|
| M6 | AT 206* |
| M8 | AT 208* |
| M10 | AT 210* |



Small box: only for DFS customers, not export - (xxx) handling cost can be charged

Samples available from stock

* **Non-stock item:** minimum order quantity required after depletion of stock

All dimensions in mm - Technical data subject to modification
Tolerances and characteristics see chapter 'Technical Information'

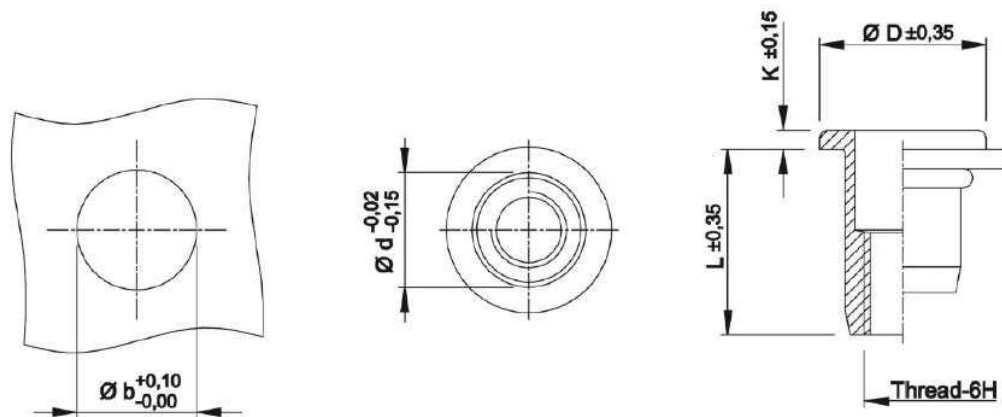


Technical Data

- General tolerances

| | Head form | Dimensions in mm | Dimensions in inches |
|--------------------|---|---|---|
| D (head diameter) | Flat head Countersunk head Low profile head | $\pm 0,35$ 0 -0,5 -0,15 +0,3 | $\pm .014$ 0 -.020 -.006 +.012 |
| K (head thickness) | Flat head Countersunk head Low profile head | $\pm 0,15$ 0 +0,3 -0,05 +0,3 | $\pm .006$ 0 +.012 -.002 +.012 |
| L (length) | General Stainless M10 shank 13 mm | $\pm 0,35$ $\pm 0,5$ | $\pm .014$ $\pm .020$ |
| Metric thread= 6H | | | |
| Shank size | General (incl. KN) Splined shank (RS) M10 shank 12,4 mm | -0,02 -0,15 $\pm 0,08$ $\pm 0,08$ | -.001 -.006 $\pm .003$ $\pm .003$ |

Example:



- Recommended tightening torque values (Nm)

Max. recommended torque to avoid damaging the threaded connection and ensure optimal screw-nut assembly:

| | M3 | M4 | M5 | M6 | M8 | M10 | M12 |
|-----------------|-----|-----|-----|------|------|------|------|
| Aluminium | 2,0 | 2,2 | 4,5 | 9,5 | 17,0 | 30,0 | |
| Steel | 2,5 | 3,0 | 5,9 | 11,0 | 25,0 | 49,0 | 80,0 |
| Stainless Steel | 2,5 | 3,0 | 5,9 | 11,0 | 25,0 | 49,0 | 80,0 |

Recommendations for 8.8 bolts in steel and class A2-70 bolts in stainless steel.